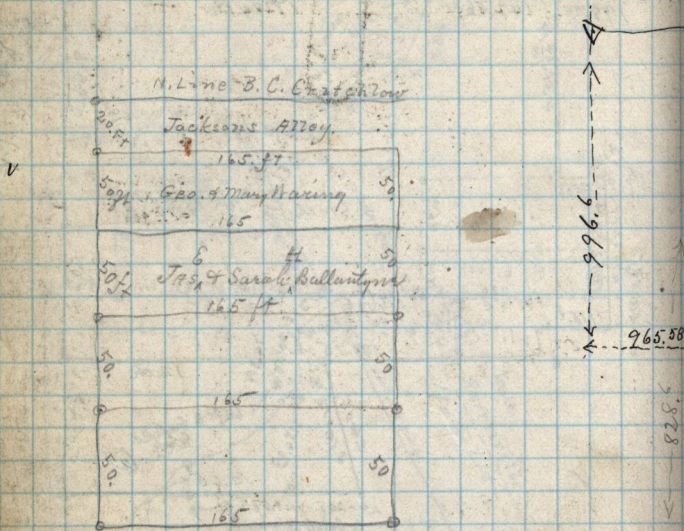


March 5<sup>th</sup> 1859Survey of part of B. C. Cratchlow  
Block in Sec 5. T. 5. N. R. 11 W.

Copy of deed from W<sup>m</sup> Elmer to Edward Maw dated  
January 9-1878 - L. 216 - Part of S. W. 1/4 Sec 19 T-6-N-R-1-W.  
beg. 1.63 ch. W. from S. E. cor. 1/4 Sec, W. 12.50 ch. N 55° 30' W  
8.00 to channel of Ogden River, up river to point N. 44 1/2° W  
2.78 ch. from beg. from beg. S 44 1/2° E 2.78 ch to beg. 4.6 a

Copy of deed from H. P. M. Mason to Louisa Coleman  
dated - September 19-1881 - Recorded O-501-  
Part of Block 4 - South Ogden Survey in Ogden  
City Survey, beginning 66 feet South from  
N. W. cor said Block E, 5.00 ch S 1.00 ch  
W 5.00 ch, N 1.00 ch to beg. 1/2 a.